



**Safety storage cabinet V-MOVE-90**  
**Model V90.196.045.VDAC:0013, body colour anthracite grey (RAL 7016), with vertical drawer in light grey (RAL 7035)**

**Safe and approved storage of flammable hazardous substances in working areas**

#### Function / construction:

- **Robust construction and longevity:** robust, high-quality, scratch-resistant outer body with powder-coated surface
- **Electronic opening and closing:** the vertical drawer opens and closes at the push of a button
- **Perfect access:** the vertical drawer provides an overview and simple access to the stored containers
- **Always closed:** serial automatic door closing (TSA) after approx. 60 seconds with acoustic and visual signal before drawer closing
- **No unauthorised use:** vertical drawer lockable with cylinder locking (integration in an existing locking system possible) and locking state indicator (red/green)
- **Easy alignment:** adjusting aids to compensate for uneven floor
- **Ventilation:** integrated air ducts ready for connection (DN 75) to a technical exhaust system

#### Dimensions

|                   |         |
|-------------------|---------|
| Width (external)  | 449 mm  |
| Depth (external)  | 860 mm  |
| Height (external) | 1966 mm |
| Width (internal)  | 331 mm  |
| Depth (internal)  | 775 mm  |
| Height (internal) | 1750 mm |

The available internal dimensions can vary depending on the interior equipment package.

#### Weight / Load

|                                   |                       |
|-----------------------------------|-----------------------|
| Weight without interior equipment | 344 kg                |
| Distributed load                  | 580 kg/m <sup>2</sup> |
| Maximum load                      | 140 kg                |

#### Ventilation

|   |                     |
|---|---------------------|
| Extraction air                              | 75 DN               |
| Minimum exhaust air quantity 10 times       | 5 m <sup>3</sup> /h |
| Differential pressure (10 times air change) | 5 Pa                |

#### Electrical component

|                                   |                        |
|-----------------------------------|------------------------|
| Connection cable                  | 5 m                    |
| Positioning of connection cable   | Ceiling of the cabinet |
| Frequency                         | 50/60 Hz               |
| Power consumption in operation    | 50 W                   |
| Power consumption in standby mode | 0,5 W                  |
| Maximum current consumption       | 0.5 A                  |
| Nominal voltage                   | 85-265 V               |

#### Colouring / Surface finish

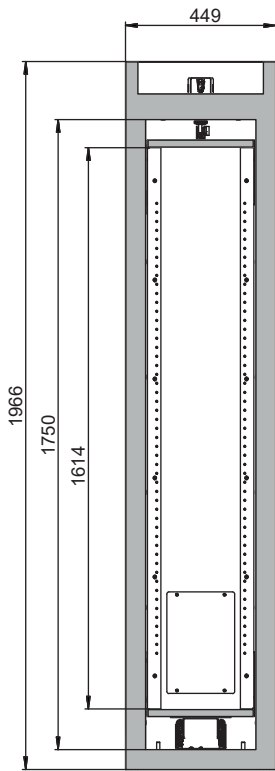
|                              |                 |
|------------------------------|-----------------|
| Body colour code             | RAL 7016        |
| Body colour                  | anthracite grey |
| Body surface finish          | textured        |
| Door / Drawer colour code    | RAL 7035        |
| Door / Drawer colour         | Light grey      |
| Door / Drawer surface finish | textured        |

#### General Information

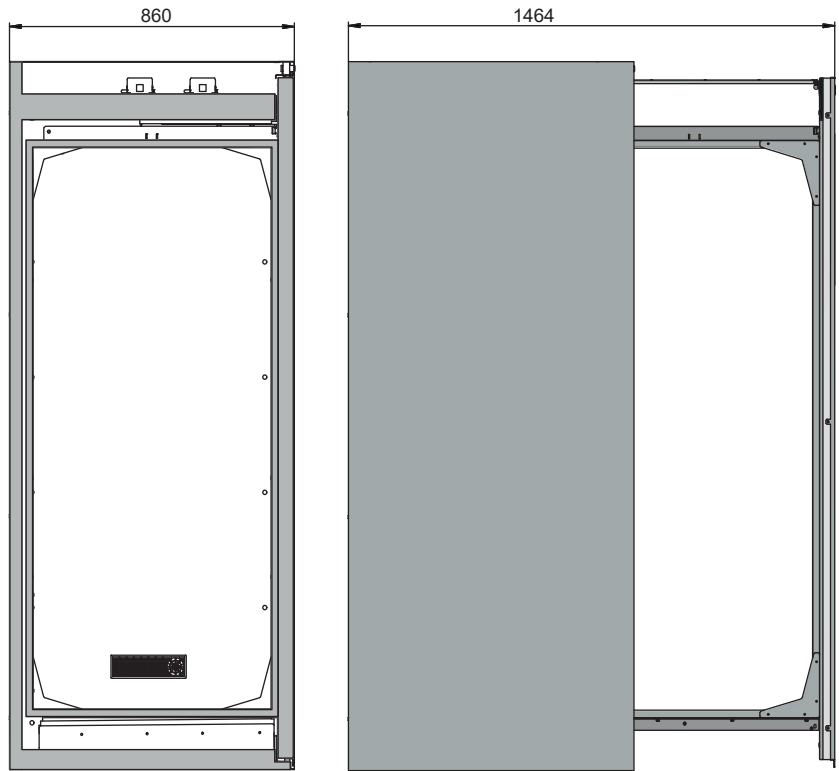
|  |          |
|--|----------|
| Storage capacity of 400 ml aerosol cans                | 46 piece |
| Storage capacity of 1 litre laboratory glass bottles   | 21 piece |
| Storage capacity of 2.5 litre laboratory glass bottles | 8 piece  |
| Customs tariff number                                  | 94032080 |

Storage capacities per storage level / type of container

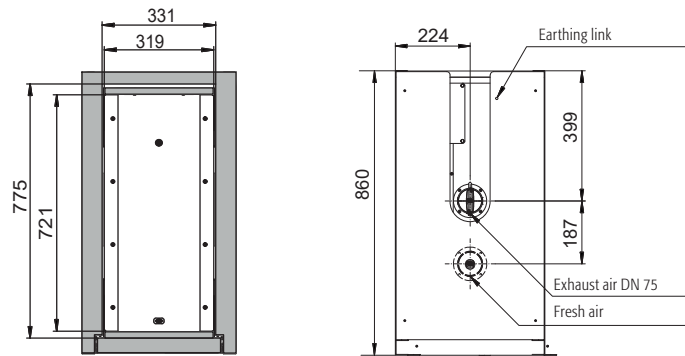
Front view



Side view



Top view



For further information please visit [www.asecos.com](http://www.asecos.com)